

# Dell KACE™ M300 Asset Management Appliance

## Asset management made simple



The Dell KACE™ M300 Asset Management Appliance is the ideal asset management solution for small business—an easy-to-use appliance that reduces the repetitive and time consuming task of PC and software inventory, saving time and money, and helping to ensure software license compliance.



### The challenge

IT administrators at small companies are challenged to do more with less. They face a unique set of issues, particularly when it comes to asset management and software license compliance because they generally don't have the time or tools to properly audit their systems. Potential problems administrators face include lost assets, security breaches, end user downtime, and underutilized software or compliance fines.

### The options

Small businesses used to have three choices: continue to manage assets and software licenses with manual spreadsheets and shoe leather, download some "free" software and try to make it work or buy a software solution that was designed for larger enterprises. Those days are over with the introduction of the M300 Asset Management Appliance. It provides a focused solution to deliver exactly what small businesses need to get the job done.

### The solution

The Dell KACE M300 Asset Management Appliance provides small companies with an easy-to-use appliance-based solution that is perfectly tailored to eliminate tedious and time-consuming tasks. The Dell KACE M300 tracks software and hardware inventory and helps ensure software license compliance by automatically keeping track of software assets. The M300 comes from KACE - the leading systems management appliance vendor and maker of the award winning K-Series of Management Appliances.

"The M300's appliance-based approach is extremely appealing to us—it's plug-and-play and the administrative console is simple to use. I can set it up, deploy it and use it all in the same day."

*William Hoch*  
Systems Analyst,  
City of San Carlos

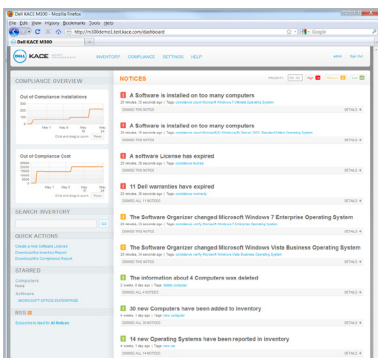
## The M300 Appliance Benefits

- **Save time** - reduce time spent tracking systems and installed software, and determining configurations
- **Save money** - discover unused software license inventory, allowing organizations to reduce expense
- **Improve IT support** - enhance troubleshooting through an accurate inventory of hardware, drivers and software
- **Improve network security** - easily identify rogue software or unapproved computers throughout the network

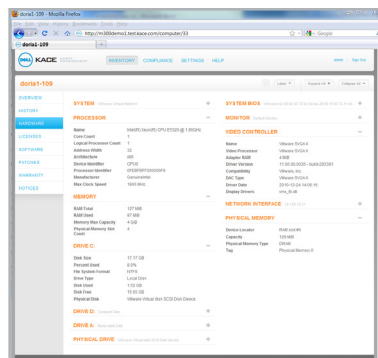
Go to [www.dell.com/kace](http://www.dell.com/kace) for details.

# Dell KACE M300 Asset Management Appliance Features

- **Device discovery and inventory** for easy real-time assessment of hardware and software on all devices network-wide
- **True compliance assessment** permits IT administrators to manage multiple software titles with various licensing structures and reconcile software installations with license ownership
- **Advanced search** utilizes filters, keywords and auto fill capabilities, making it easy to find a relevant subset of inventory and to isolate machines needing to be upgraded or retired
- **Patch inventory** tracks installed security updates and Windows service packs on computers connected to the network
- **Dell warranty integration** automatically retrieves warranty information for managed Dell computers and alerts administrators of pending expirations
- **Alerts and notifications** of PC inventory and software license compliance issues and the automatic creation of a "to do" list for achieving compliance
- **Dashboards** display network activity including recent changes and outstanding tasks
- **Plug and play deployment** allows the appliance to immediately begin providing hardware and software inventories
- **Intuitive Web-based user interface** accessible from the convenience of any desktop, laptop, or mobile device



M300 dashboard



Easy-to-digest PC inventory

## System Requirements

### Managed System Requirements

Windows clients only. For minimum specifications refer to OS vendor minimum requirements. The KACE M300 Asset Management Appliance imposes no additional requirements, and supports 32-bit & 64-bit architectures where applicable.

- **Windows®**
  - Windows 7 (Professional, Enterprise, Ultimate)
  - Windows Vista (Business, Enterprise, Ultimate)
  - Windows XP (Professional)
  - Windows Server 2008 R2 (Enterprise, Standard, Web)
  - Windows Server 2008 (Enterprise, Standard, Web)
  - Windows Server 2003 R2 (Enterprise, Standard, Web)
  - Windows Server 2003 (Enterprise, Standard, Web)

## Models

		M300
Capacity	Recommended Maximum Managed Nodes	200
	Storage	16 GB SSD
Hardware	Dimensions (inches)	1.5 X 5.79 X 5.79
	CPU	Marvell Armada 6282 (2.0 GHz)
	Memory	2 GB
	Ethernet Port	Single Gigabit Ethernet Port
	USB 2.0 Ports	2
	Power Supply	30 Watts, 100-240 VAC

### Dell KACE Headquarters

1981 Landings Drive  
Mountain View, CA 94043  
877-MGMT-DONE Main  
650-649-1806 Fax

### www.dell.com/kace

kaceinfo@dell.com  
European Sales: kaceemea@dell.com  
Asia Pacific Sales: kaceapac@dell.com  
Australia New Zealand Sales: kaceanz@dell.com

While every effort is made to ensure the information given is accurate, Dell does not accept liability for any errors or mistakes which may arise. Specifications and other information in this document may be subject to change without notice.

Dell and KACE are trademarks of Dell Inc. Dell disclaims any proprietary interest in the marks and names of others. Microsoft and Windows are registered trademarks of Microsoft Corporation.

