

# Dell KACE K1000 Systems Management Appliance Express

The free, easy-to-use, inventory and management solution for Dell customers

The Dell™ KACE™ K1000 Systems Management Appliance Express (K1000 Express) is an introductory version of the award-winning K1000 Systems Management Appliance. The K1000 Express is available exclusively to existing Dell customers. The K1000 Express is an inventory-focused software solution that manages systems that run Windows®, including laptops, desktops, servers and tablets. This no-charge version is simple to install and can be easily upgraded to the full K1000 management appliance when additional features are desired.

Designed to save you time and save your organization money, the K1000 Express is typically installed in one day and delivers near-term

results at a low total cost. Unlike traditional software approaches which require costly, complex and time-consuming implementation, training and maintenance, the K1000 Express delivers a fully integrated solution in a plug-and-play virtual form factor. It is based on an extremely flexible and intelligent purpose-built architecture that enables it to be both quickly deployed and continually self-maintaining.

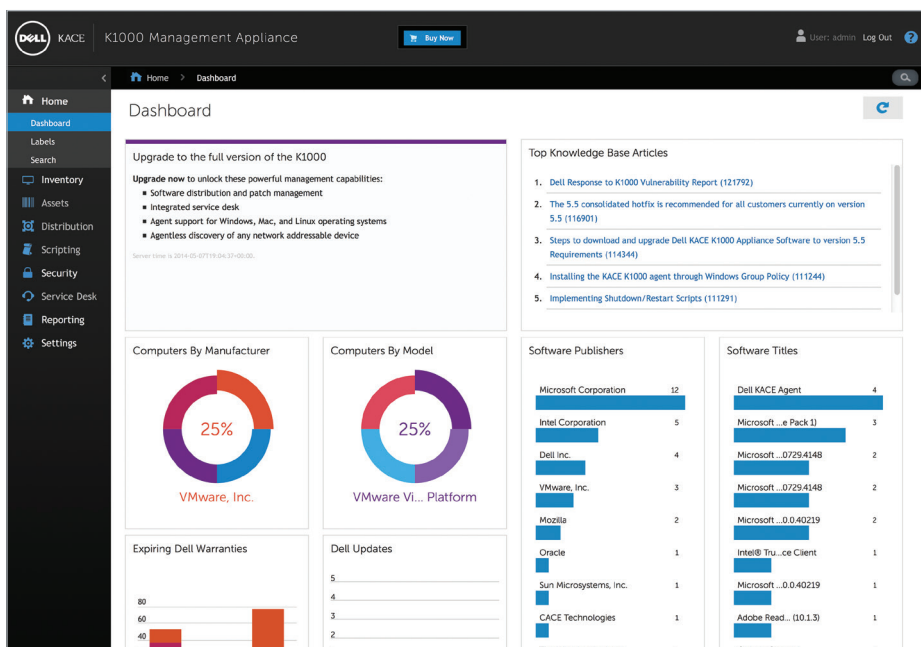
## Inventory solution for Windows systems

The K1000 Express manages systems that run Windows on x86 and x64 microprocessors. The K1000 Express enables you to easily determine system hardware and software inventory, assess Intel® vPro™ readiness, apply

The K1000 Express is a free inventory and management software solution that manages systems that run Windows, including laptops, desktops, servers and tablets.

### Benefits:

- Enables device discovery and inventory of all hardware and software network-wide, via agent-based software
- Enables patch discovery and inventory for installed Windows operating systems and many applications
- Allows for easy administration from any device via a 100 percent web-based console
- Upgrades easily to the full K1000 management appliance
- Delivers a fully integrated solution in a plug-and-play virtual form factor



The intuitive tabbed Web-based console empowers IT administrators of all levels, from junior to advanced.

## Supported systems

The K1000 Express supports 32-bit and 64-bit architectures where applicable running these operating systems:

### Windows®

Windows 8

Windows 7

Windows Vista®

Windows XP

Windows Server 2012 R2

Windows Server 2008 R2

Windows Server 2008

Windows Server 2003

### K1000 Express

For VMWare® installations  
VMware ESX™/ESXi 4 or higher

Open Virtualization Format  
(OVF) 1.0

### Microsoft Hyper-V®

Windows Server 2012/2012 R2  
with Hyper-V

Hyper-V Server 2012/2012 R2

### Virtual machine requirements

4 or more vCPUs

4 GB memory

1 Ethernet port

500 GB available disk

64-bit server and OS

### For more information

[kace.com/K1Express](http://kace.com/K1Express)

### U.S. telephone

1-877-MGMT-DONE

(1-877-646-8366)

Dell BIOS updates and manage Dell system warranties. The K1000 Express is optimized to manage Dell Windows systems, but will also manage Windows systems from other hardware manufacturers – even tablets – at no additional charge. Key Dell systems management advantages include Dell BIOS and driver updates without cumbersome searches, and access to Intel® vPro™ readiness.

## Features

Available as a software-only virtual appliance, the K1000 Express offers the following capabilities:

- Device discovery and inventory of all hardware and software network-wide, via agent-based technology
- Patch discovery and inventory for installed Windows operating systems and many applications
- Basic reporting capabilities and real time management dashboards
- The ability to download and install Dell driver updates
- The ability to download and install Dell BIOS updates
- Reporting and management of Dell system warranties
- Assess Intel vPro readiness on systems
- Access to application deployment best practices via an exclusive feed from the ITNinja.com community

The K1000 Express provides simple and secure systems administration via any web-enabled device—PC, tablet or mobile phone.

- Comprehensive search capabilities across the entire K1000 knowledge base
- 100 percent web-based console allows for easy administration from any web-enabled device

The K1000 Express provides Dell customers with the ability to experience a few popular functions of the full K1000 appliance. Its virtual appliance form factor means it can be installed anywhere, while still retaining the ability to move it to a new environment as your organization's needs change. The software is compatible with both VMware ESX™ and Microsoft Hyper-V®, providing a variety of virtualization platforms for implementation.

## Easy to upgrade

Designed to be easy to upgrade to the comprehensive virtual appliance, the simple entry of a new license key will unlock all the features of the full K1000 Systems Management Appliance, while maintaining all of the data and settings created using the K1000 Express.

## Recent customer survey results\*

- 80 percent of users who evaluated ROI report the KACE appliance paid for itself in fewer than six months
- 63 percent of customers deployed their appliances within a week
- 78 percent of customers reported "high" satisfaction with their appliances

\*Based on November 2013 Dell KACE customer survey for the fully featured, paid version of the K1000 management appliance

## About Dell Software

Dell Software helps customers unlock greater potential through the power of technology—delivering scalable, affordable and simple-to-use solutions that simplify IT and mitigate risk. This software, when combined with Dell hardware and services, drives unmatched efficiency and productivity to accelerate business results. [www.dellsoftware.com](http://www.dellsoftware.com).

## Dell Software

5 Polaris Way, Aliso Viejo, CA 92656 | [www.dell.com](http://www.dell.com)  
If you are located outside North America, you can find local office information on our Web site.

© 2014 Dell, Inc. ALL RIGHTS RESERVED. Dell, Dell Software, the Dell Software logo and products—as identified in this document—are registered trademarks of Dell, Inc. in the U.S.A. and/or other countries. All other trademarks and registered trademarks are property of their respective owners.  
Datasheet-K1Express-USA-NK-24389

